

Local Centres

If your enquiry relates to any of the areas below, please make your initial contact with the Retail Champion or the appropriate Town Centre Manager or to the Local Centre contact.

Retail Champion
07980 672338

Nigel Godfrey
nigel.godfrey@birmingham.gov.uk

Acocks Green
0121 464 0106

Melinda Brown
acocksgreentcm@birmingham.gov.uk

City Centre
0121 616 2877

Assia Begum
assiabegum@retailbirmingham.co.uk

Erdington
0121 384 5860

Graham Kay
grahamkay@etcp.org.uk

Harborne
0121 675 3994

Robert A Flack
robert.flack@birmingham.gov.uk

Jewellery Quarter
0121 464 1186

Andy Munro
andy.munro@birmingham.gov.uk

Kings Heath & Moseley
0121 675 5013

Nikki Carr
nikki.carr@birmingham.gov.uk

Northfield
0121 411 2157

Tony Adams
tony.adams@birmingham.gov.uk

Sparkbrook/Springfield
0121 303 7905

Richard Welch
richard.welch@birmingham.gov.uk

Washwood Heath
07825 282529

Mushtaq Hussain
mushtaq.hussain@birmingham.gov.uk

You can ask for a copy of this leaflet in large print, another format or another language. We aim to supply what you need within ten working days.

If you have hearing difficulties please contact us via
RNID Typetalk 18001 0121 303 2462 or Relay Assist 08702 409598



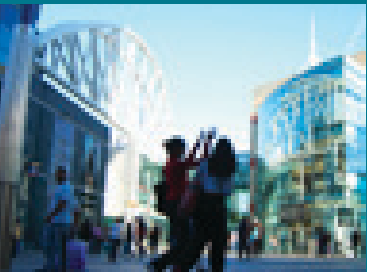
Are you an existing **independent retailer** looking to improve, rebrand, or relocate your business in **Birmingham**?

Or are you a **new independent retailer** looking to set up? If so, then we may be able to assist you.



The **Retail Development Programme** is funded by the Working Neighbourhoods Fund and runs from October 2009 to March 2011. It is aimed specifically at supporting new and existing independent retailers, citywide.

Birmingham City Council will manage and deliver the programme, in partnership with Business Link West Midlands and the local Town Centre Managers.



Financial assistance provided by Birmingham City Council:

A grant award between £2,500 and £10,000. Eligible costs will include:

- » Installation (heating & lighting)
- » Fascia improvements/shop fitting /signage
- » Connections (fax, telephone, broadband)
- » Professional fees (solicitors, surveyors, designers)
- » Marketing & Branding
- » Rent and rates*
- » Removal costs*

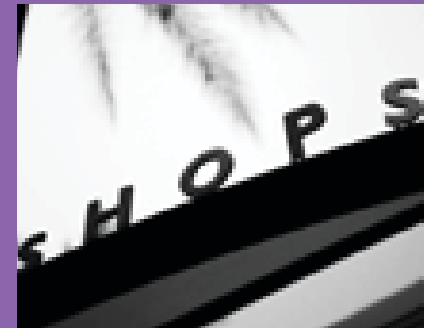
Grant equivalent to 50% of eligible costs, subject to satisfying criteria and approval of the application by an awarding Panel

* Rent and rates are an eligible cost only if the project involves a move to new premises



Business support provided by Business Link:

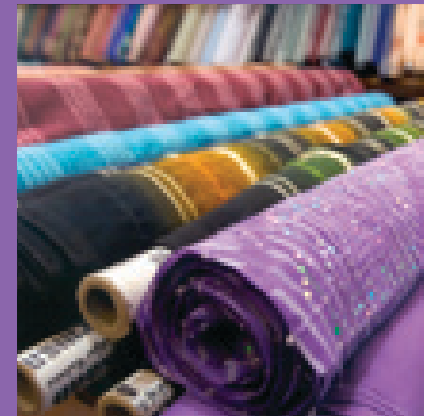
- » Business review for established businesses
- » Access to start-up advice and support



Support provided by Town Centre Managers in Local Centres:*

- » General advice and providing access to the programme
- » Local support to businesses

* for your local/nearest contact see overleaf



Contact Information

If you would like further information, please contact your Town Centre Manager in the first instance (details overleaf).

If your area is not mentioned in the list, please make contact with Shasta Rashid, Creative Development Team, Investment, Enterprise and Employment, Birmingham City Council, on:

Name: Shasta Rashid **Email:** shasta.rashid@birmingham.gov.uk
Telephone: 0121 303 2462 **Website:** www.birmingham.gov.uk/RDP

